

Access to >100 Million Lives in Europe

Certara Evidence & Access Real World Data Solutions

Prior to August 2017, there were only a few data sources that were easily accessible in Europe. All of these data are relatively small (approx. 5-7 million) and primary care-based databases.

Since August 2017, the French agency has made the French national healthcare systems database—SNDS data—accessible to private organisations (pharmaceutical companies need to access the data via a certified third-party) and this does not have to be through academic affiliations or following a request from an agency (EMA, HAS etc.). The access request now is required to demonstrate a scientific or medical research need rather than affiliations or requests from agencies.

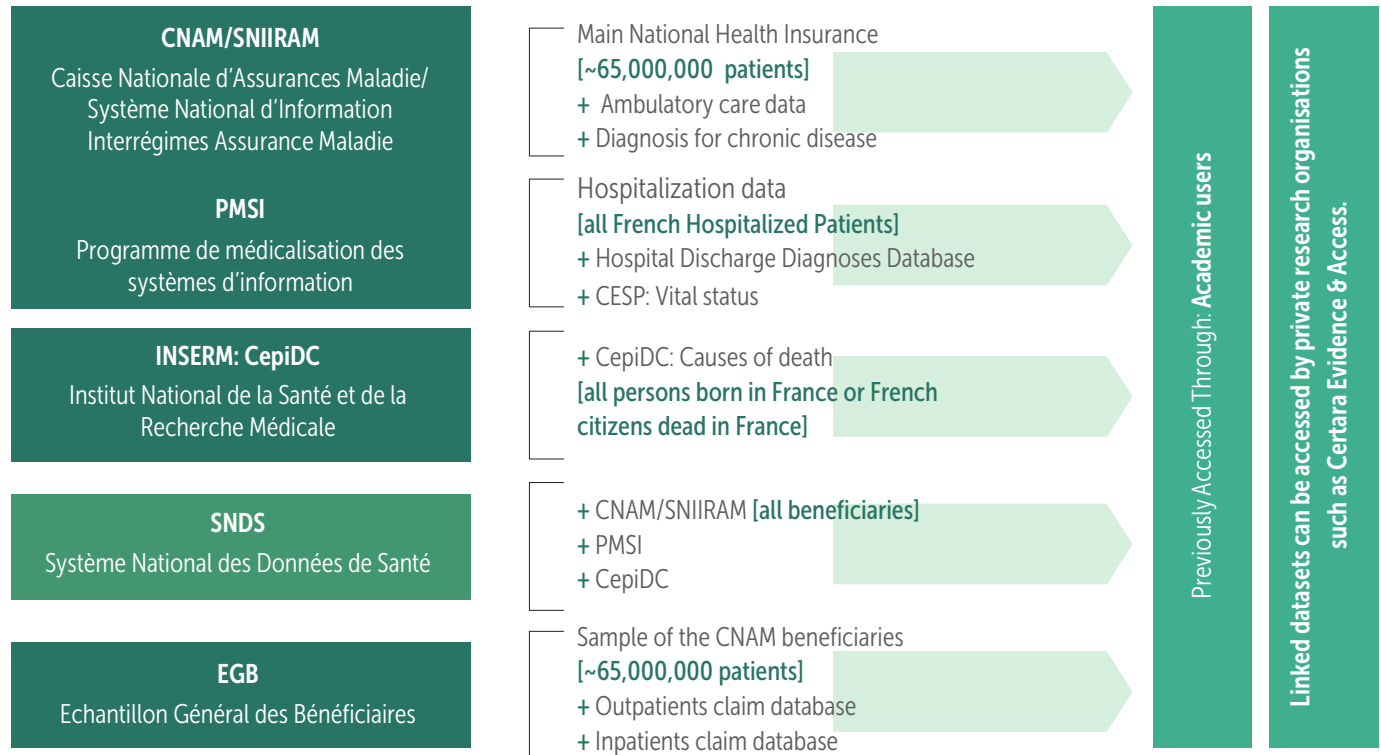
Certara Evidence & Access is proud to be the first successful non-academic applicant to get a positive response towards SNDS data access. We have been partnering with many industry clients as a pioneer to access the new SNDS data. Combined with our own ANSER Real World Data Sets and other databases in Europe, this offers a combined population of more than 100 million lives in Europe.

<p>Selected Experience with Specialized EU Datasets</p>	<p>The SNDS data have the following characteristics:</p>	<p>ANSER Real World Datasets</p>								
<p>SNDS (France) 65 million lives</p> <p>CPRD (UK) 5-7 million lives</p> <p>German Sickness Fund 5-7 million lives</p> <p>Nordics Databases 15 million lives</p> <p>Hungary 9 million lives</p>	<ol style="list-style-type: none"> 1) 65 million lives 2) Data for 10 years is available 3) Anonymised data on: <table border="1"> <tr> <td>+ Socio-demographics</td> <td>+ Diagnosis</td> </tr> <tr> <td>+ Medical Characteristics</td> <td>+ Drugs and procedures</td> </tr> <tr> <td>+ Ambulatory Care</td> <td>+ Mortality data</td> </tr> <tr> <td>+ Hospitalizations</td> <td>+ Costs data</td> </tr> </table> <p>The SNDS data can be extremely powerful as the database size is very large and representative of the French population, even for extremely rare diseases/presentations. With a prevalence of <1 in 10,000 general population, the SNDS can provide sample sizes of >1,000.</p>	+ Socio-demographics	+ Diagnosis	+ Medical Characteristics	+ Drugs and procedures	+ Ambulatory Care	+ Mortality data	+ Hospitalizations	+ Costs data	<p>Disease registries with linked medical and patient reported data:</p> <p>Neurology</p> <ul style="list-style-type: none"> + Epilepsy + Stroke + Multiple Sclerosis <p>Oncology</p> <ul style="list-style-type: none"> + Prostate Cancer + Breast Cancer <p>Cardiology</p> <ul style="list-style-type: none"> + ACS + Atrial Fibrillation
+ Socio-demographics	+ Diagnosis									
+ Medical Characteristics	+ Drugs and procedures									
+ Ambulatory Care	+ Mortality data									
+ Hospitalizations	+ Costs data									

The French National Health Data System



AN AMALGAMATION OF THE FOLLOWING DATA



Senior Real World Evidence Team



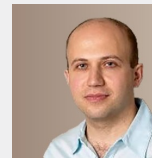
Billy Amzal

SVP, Decision and Real-World Data Analytics



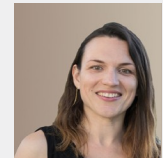
Sumeet Bakshi

VP, Real World Evidence Solutions



Artak Khachatryan

Sr. Director, Pharmacoepidemiology



Nadia Quignot

Director, Decision Analytics & Real World Evidence

"Since 2017, [...] the collaboration with Certara's dynamic team has always been constructive and positive, resulting in the signature of a multitude of contracts governing the provision of SNDS data for the realization of various studies in the field of health."—Julius Kemme, French Health Insurance (CNAM, SNDS data owner)

Why choose Certara Evidence & Access to get access to the data?

- We demonstrated our efficiency in getting access to these data, being the first outside of the academic world.
- We have an in-depth knowledge of the French context, with **more than 15 years of experience in conducting observational studies in France.**
- Our **international experts based in the UK, France, the US, Germany, Switzerland** and other countries are readily available to demonstrate the advantages of this database and answer all your questions.

CERTARA EVIDENCE & ACCESS

With a global staff of 850+ employees around the world, Certara maintains 14 offices across the US as well as 20 international locations. Our teams are offering global strategy matched with deep local expertise in the US markets, Canada, Germany, United Kingdom, France, Italy, Switzerland, Poland, Japan, China and Australia among others.

Certara USA, Inc.,
100 Overlook Center, Suite 101,
Princeton, NJ 08540 USA
T1.1-888-708-7444
T2.1-919-852-4685

Certara Evidence & Access
54 rue de Londres
75008 Paris
T. +33 1 83 62 91 52
E. evidence.access@certara.com